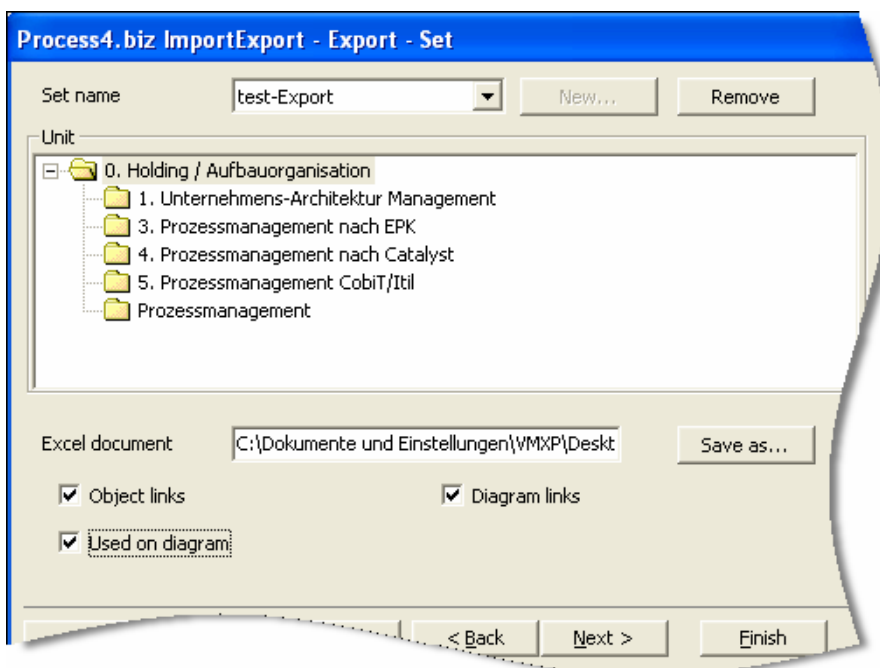


## OPTIONAL EXTENSIONS

The process4.biz Extensions are **individually licensed modules** that may complement either the process4.biz Core, or the Core supplemented by one or both of the two additional modules process4.biz CobiT/ITIL and process4.biz Dynamics AX. The common feature of all Extensions is that they transfer selected database contents to applications outside process4.biz either for **further processing**, or for **presentation and publication purposes**.

### process4.biz Excel Import-Export & PowerPoint Wizard (IEW)

The module supports **bidirectional exchange** of selected database contents between the process4.biz database and Microsoft Excel. Data already present in the database can be exported to and updated in Excel. The updated version – or new data created in Excel - can be loaded back to the database. Examples for new data created in Excel are translations of model data, process or task descriptions for company departments without a process4.biz license, etc.



When **exporting data**, authorized users can create individual export profiles („sets“) for recurrent tasks.

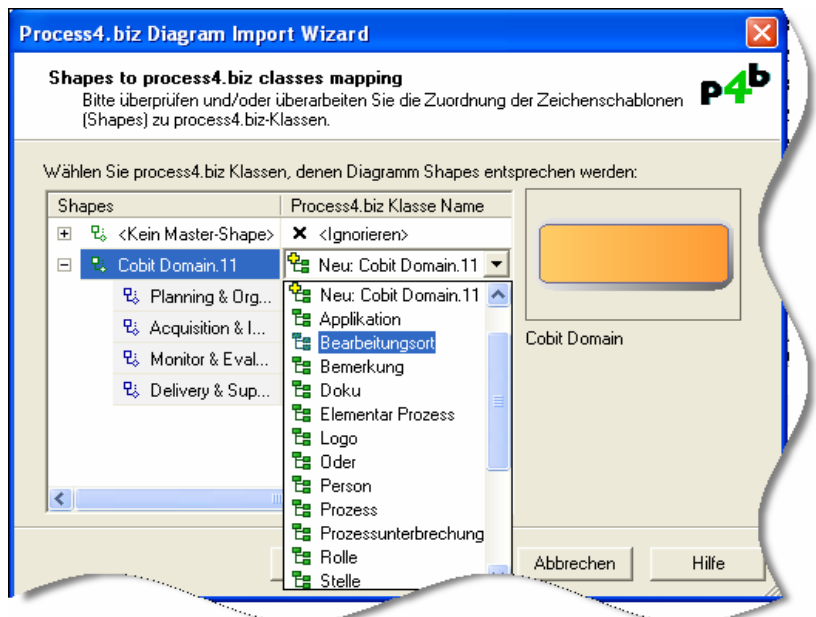
This helps to avoid defining the same set of data each time when exporting a specific object. Items that may be exported are object descriptions, or descriptions of relations between objects and other objects or diagrams.

Objects to be exported are selected and defined on the basis of their specific attributes and of the object classes or models they belong to.

Before **importing** data from Excel, the distinct identification number of the object to be imported is looked up in the database before the import process starts. If the object existed previously, the import process is limited to those attributes of the object that had been changed in Excel. When no object with that identification number exists in the database, the wizard sets it up. An allocation dialog helps to define fields in the database corresponding to the cell contents in Excel.

Existing Visio diagrams can also be imported into the process4.biz database structure. Master shapes are taken over as-is, single shapes get allocated to the class they should belong to.

The **PowerPoint component** of the Wizard is an excellent tool to prepare presentations including selected graphical contents (diagrams). The diagrams can be embedded either as Visio diagrams or as PowerPoint graphics.



## process4.biz Word Reporter (WR)

The Word Reporter provides unidirectional data transfer of selected and preformatted graphical or descriptive database contents into any **Microsoft Word document**. A corresponding Table of Contents and an Index for each document is also generated. The resulting static document presents the current status of a model (or of a part of it), and can be utilized in a number of ways, e.g. for audits, as part of a Project Development Report, for requirements specifications etc.

## process4.biz Excel Pivot Reports (EPR)

Excel Pivot tables provide more refined data manipulation possibilities than two-dimensional Excel tables. Drill-down is one of the extra features of Pivot Reports. Different Reports can be generated by **sorting**, **filtering** and **moving** data, depending on which **relationships** between objects should be focused on.

A new **Report Engine** is planned to supplement process4.biz Excel Pivot Reports soon. The new Engine enables users to query object and diagram data and their relationships using user defined query parameters.

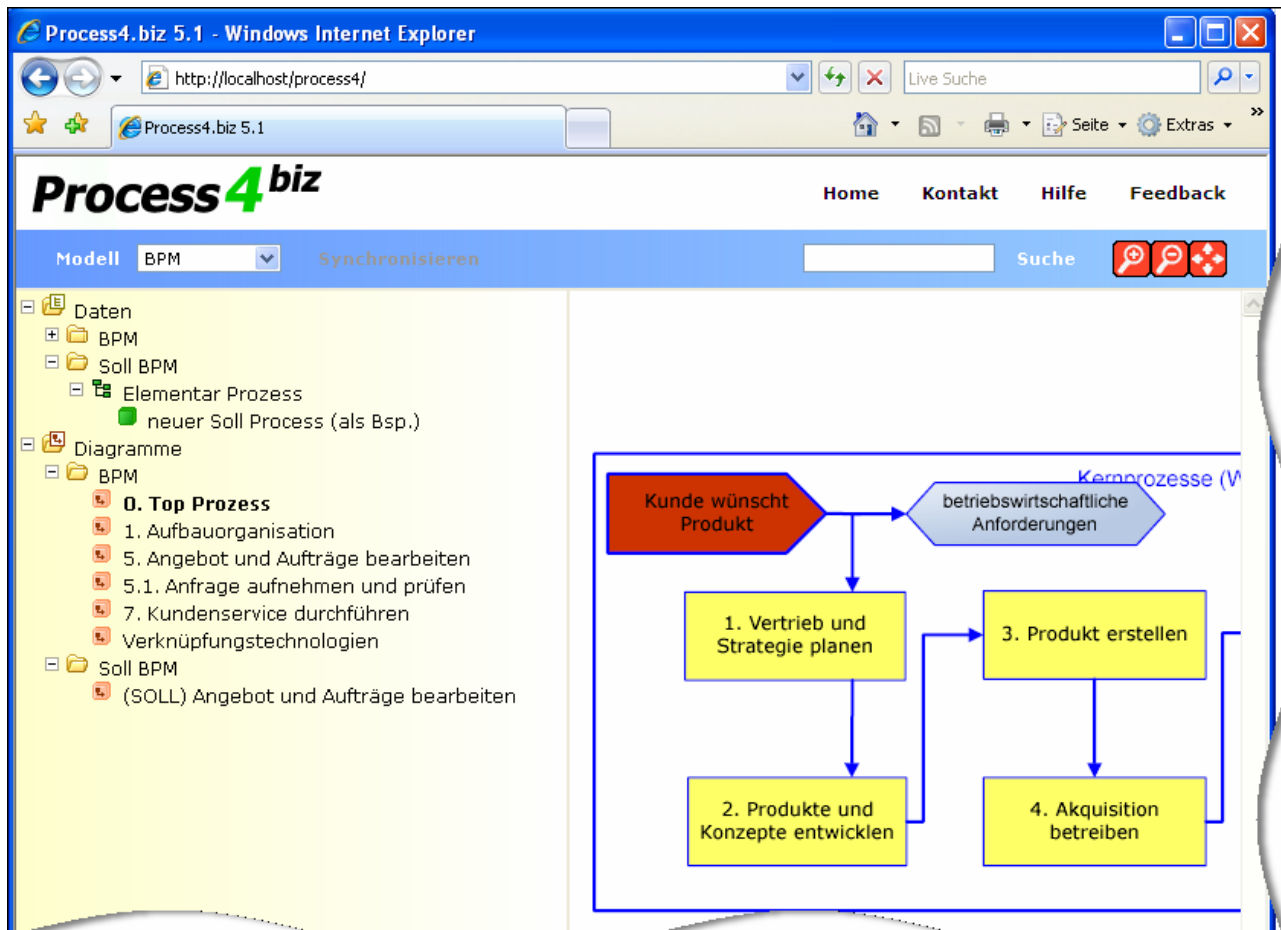
## process4.biz DB Replication (DBR)

Replication processing means **copying** and **synchronizing** database contents in different SQL servers. Replication is an easy way to map the contents of a database in a central SQL server running online in a LAN with the updated contents of different offline databases implemented on desktops systems.

Update conflicts between the central database and the local replicas can be resolved manually. The replication tool is especially valuable for large projects with distributed team members (e.g. external consultants) without permanent access to the central database.

process4.biz Web Publisher (WP)

The Web Publisher transforms selected descriptive and/or graphical model data that had been set up with the process4.biz Core module into **static web pages** in HTML and SVG-format. For the publishing process itself a **web server** (Microsoft IIS – Internet Information Services – or Apache) is necessary.

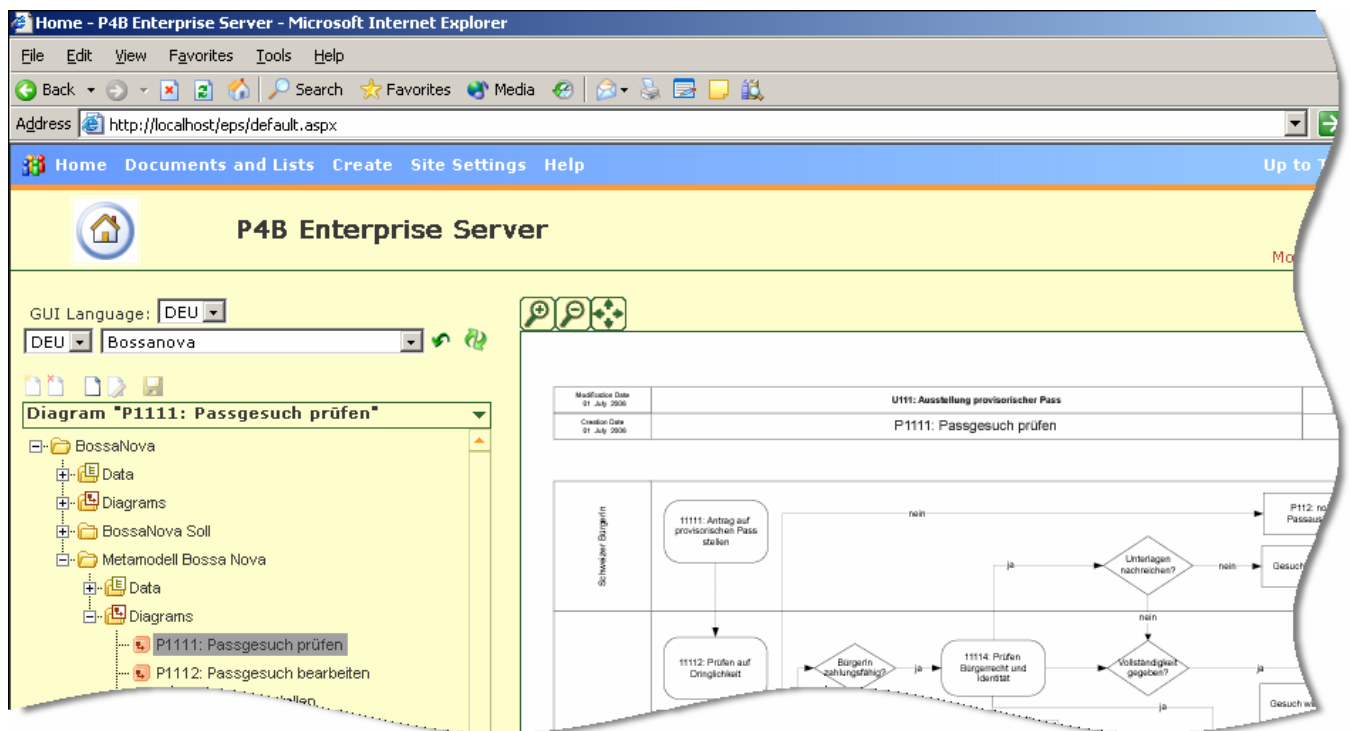


This very reasonably priced tool provides several navigation alternatives (smart tags, hyperlinks, navigation tree, etc.), and also filtering, search and feedback options. The data collection for web publishing purposes can be enriched by additional datasets and URLs to other websites, resulting in a comprehensive **Company Knowledge Portal**.

Published contents can be updated or deleted in several languages on several servers. However, as there is no permanent connection between the database and the Web Publisher, their respective contents are not synchronized. There is no edit function in the Web Publisher like it is provided with the Enterprise Portal Server (EPS), because the role based process4.biz authentication concept is not forwarded to the web server.

### process4.biz Enterprise Portal Server (EPS)

The EPS is a **standalone portal server** based on Microsoft's Windows SharePoint Services (WSS) technology and the .NET architecture included in all Windows 2003 server operating systems. The portal server is **permanently connected** to the database, and therefore there is no need to convert the data to HTML (but still to SVG [scaleable vector graphics] format) or to publish it: the selected contents are always up-to-date, i.e. **synchronized** with the corresponding database contents. Visual appearance and functions as well as an intuitive navigation system are conforming to the corresponding components within the process4.biz client software.



**Access control** for the Enterprise Portal Server can be managed by Windows domain logon (single sign-on), and the process4.biz authentication system is also supported. Authorized customers may access, allocate, modify or delete descriptive model data (objects and their attributes) through any web browser.

**Files** in any format may be associated with objects or their diagram representation. The associated files can be **checked out** for updates and **checked in** again, supported by an appropriate version management containing user documentation. The check-out function protects files against being overwritten by other users.