

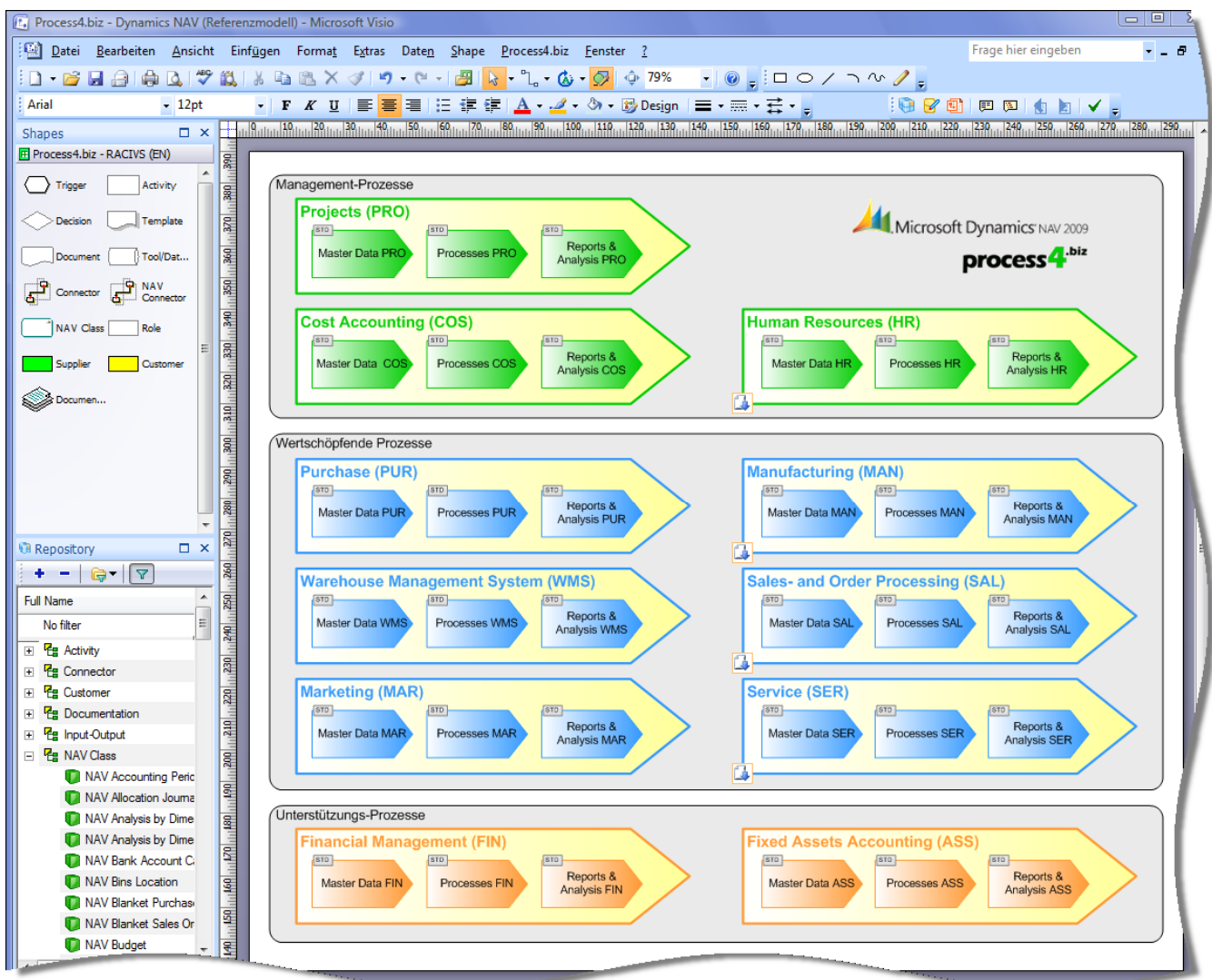
REFERENCE MODEL: Process4.biz Dynamics NAV

The **process4.biz Dynamics NAV reference model** is an additional module that complements our versatile and easy-to-use process4.biz modeling software. The reference model contains flexibly expandable process diagrams for in-depth visualization, modification, modeling, development and documentation of Dynamics NAV standard processes.

Our solution is ideally suited for companies who want to optimize Dynamics NAV functions with regard to company organization structures and operational processes. The reference model is based on the process4.biz Core modeling tool and can be complemented by an interface for the integration of the process diagrams into the ERP-system.

Enterprise Resource Planning is related to a large number of other systems and processes companywide. In order to account for dependencies and interprocess relations it is possible to display and analyze them within a common model.

The following diagram represents the process landscape of our Dynamics NAV reference model and is best suited as an entry point to standard and individual processes alike:



Dynamics NAV

BENEFITS OF THE REFERENCE MODEL process4.biz Dynamics NAV

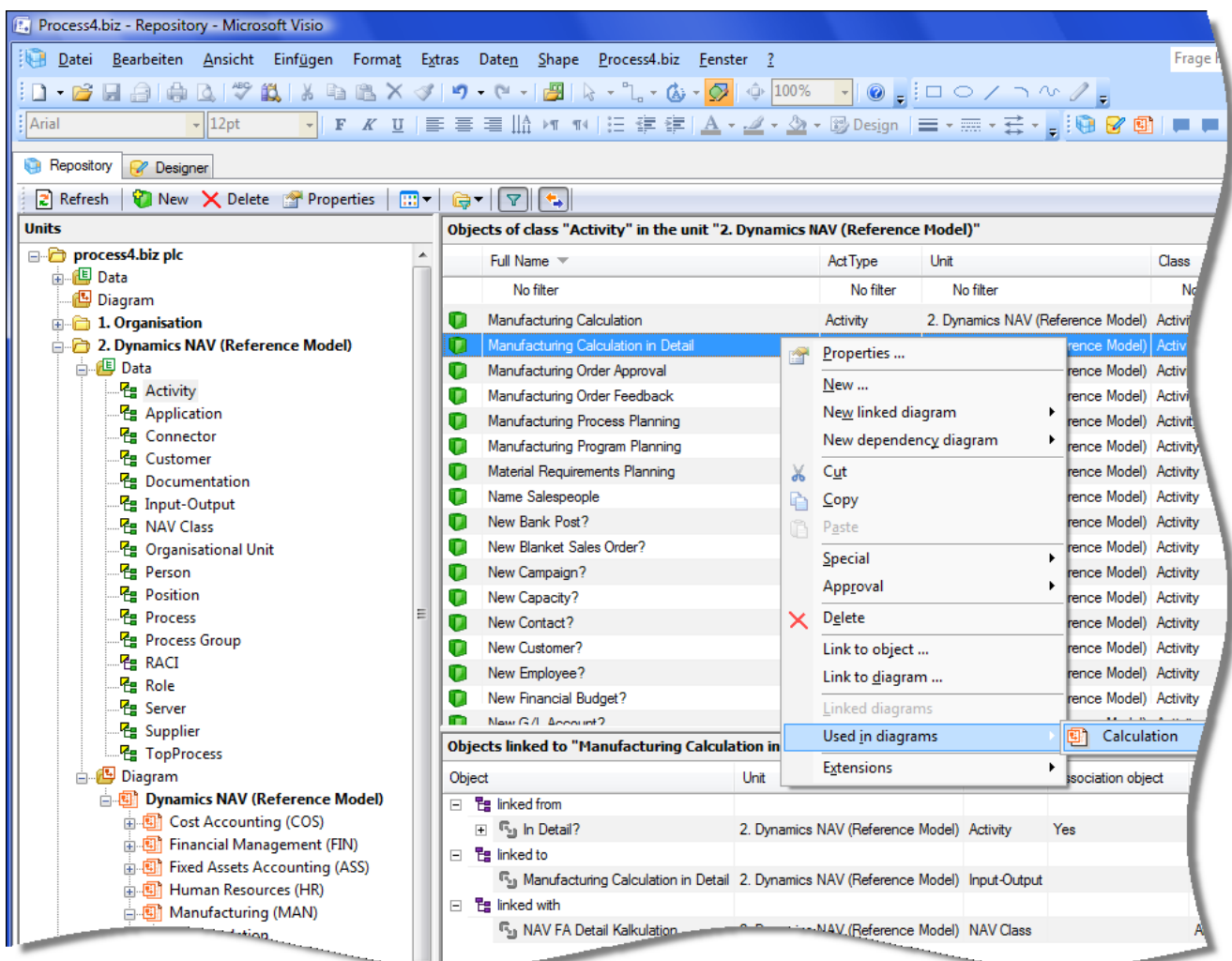
Flexible modeling benefits all project phases

Our reference model **contains all standard processes**. However, our customers are free to add their own individual nonstandard processes. Modifications and adjustments of the ERP system can be compared to the reference model and then **(re)documented**. This flexible adaptability of the reference model is a valuable feature during all phases of the project and the **whole lifecycle of the ERP system**.

When **planning a project**, company specific adaptations of the reference model reflect company operations more clearly. They serve as input for requirement specifications and help to create a traceable and more coherent project structure.

During the **execution phase** of a project it may help to control if all activities, including project-related training, conform to predefined project objectives.

After **project closure** the reference model is available for planning, budgeting and evaluating support activities and to transparently represent interfaces to third-party systems. A properly configured reference model maps the entire enterprise architecture and can be profited from as a point of reference for migrations and release updates.



Modeling business processes for Dynamics NAV

The modeling process itself, i.e. the design, visualization and (re-)documentation of Dynamics NAV standard processes is performed by means of **the process4.biz Core** embedded in Microsoft Visio. For a detailed description of the Core module, please visit our website (<http://www.process4.biz>) and select the corresponding navigation item.

The modeling process is **redundancy free**. Once a data item had been allocated and defined, it can be reused on as many different levels of the hierarchical model structure as you deem necessary. Different models can be **interconnected** within the same database. Interrelated models reflect the complexity of operational processes and responsibilities within a company much better than single models representing isolated structures. Each process step can be associated with the corresponding unit or function within the company that is responsible for the successful completion of that step. **Responsibility assignments** are based on the **RACI method** (responsible, accountable, consulted, and informed).

Process4.biz modeling templates for Dynamics NAV

Customers have several options when using the process4.biz reference model. The comprehensive framework contains **all Dynamics NAV standard processes** and can be deployed as is, without change, or customized to adapt it to your specific company requirements. Users may establish and implement their own modeling methods and notations, and also **use more than one method simultaneously**.

User-made modifications of the Dynamics NAV standard processes can be compared to the original processes in our reference model. The matching process results in information about the **extent of conformity** between a company's own ERP processes and the standard Dynamics NAV processes. Extent and kind of **deviations from standard processes can be recorded** and taken into account for system parameter definitions and requirement specifications, and also for tests, release upgrades and migrations.

Integrated (re-)documentation for Dynamics NAV

Once matching is under way or completed, users can **(re)document** changes and deviations from the standard functions represented by the Dynamics NAV module.

Company specific processes can be easily recorded in the reference model or in its customer implemented derivations by means of **Dynamics NAV dialog panels** directly available within the process4.biz reference model. Each process step can be further commented upon by several kinds of documents attached to it.

The **process4.biz extension modules** (i.e. WordReporter, Excel-Import&Export-Wizard) are excellent tools to update or to communicate models, for example as a Dynamics NAV Users' Guide. Our web portal solutions provide a simple and comfortable way to publish selected contents in the company intranet. For detailed information about the process4.biz extension modules please refer to our website <http://www.process4.biz>.